

PRADO DAM MASTER PLAN UPDATE



Stakeholder Meeting #2

Prepared by Wendy Loeffler, RECON Environmental &
Megan Wong, USACE Los Angeles District

13 July 2017

“The views, opinions and findings contained in this report are those of the author(s) and should not be construed as an official Department of the Army position, policy or decision, unless so designated by other official documentation.”



**US Army Corps
of Engineers.**



PRADO DAM BASIN MASTER PLAN UPDATE

Presentation Outline:

- Master Planning Overview and Guidance
- Prado Dam Basin History
- Master Plan Update Project History
- Review of need for update
- Overview of study area
- Review Objectives and Land Classifications
- Master Plan Update document outline
- Solicit data and input from stakeholders



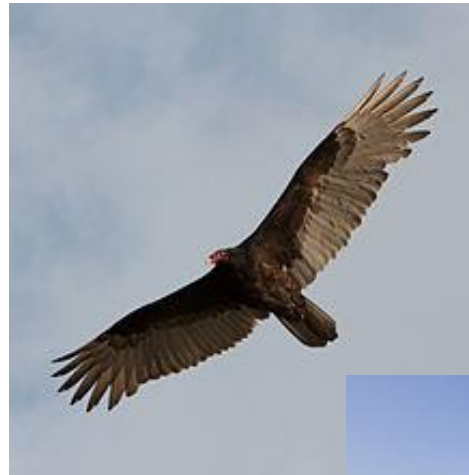
US Army Corps
of Engineers.



PRADO DAM BASIN MASTER PLAN UPDATE

Master Plans are prepared by the Corps of Engineers and govern the operations of the Corps-owned lands within the reservoirs.

The plans are periodically updated to ensure that they reflect current conditions, as well as guide the vision of the future.



US Army Corps
of Engineers.



PRADO DAM BASIN MASTER PLAN UPDATE

ER 1130-2-550 2.2 a.(1) guides development of the plans and provides the Program Mission.

The Corps functions as the steward of the lands and waters and will:

- Manage/conserve natural resources per Natural Resources Management Mission
- Provide quality public outdoor recreation experiences
- Promote natural and cultural resources awareness, stewardship, protection, compliance and restoration
- Integrate the management of natural resources with public recreation
- Manage for long-term public access



US Army Corps
of Engineers.



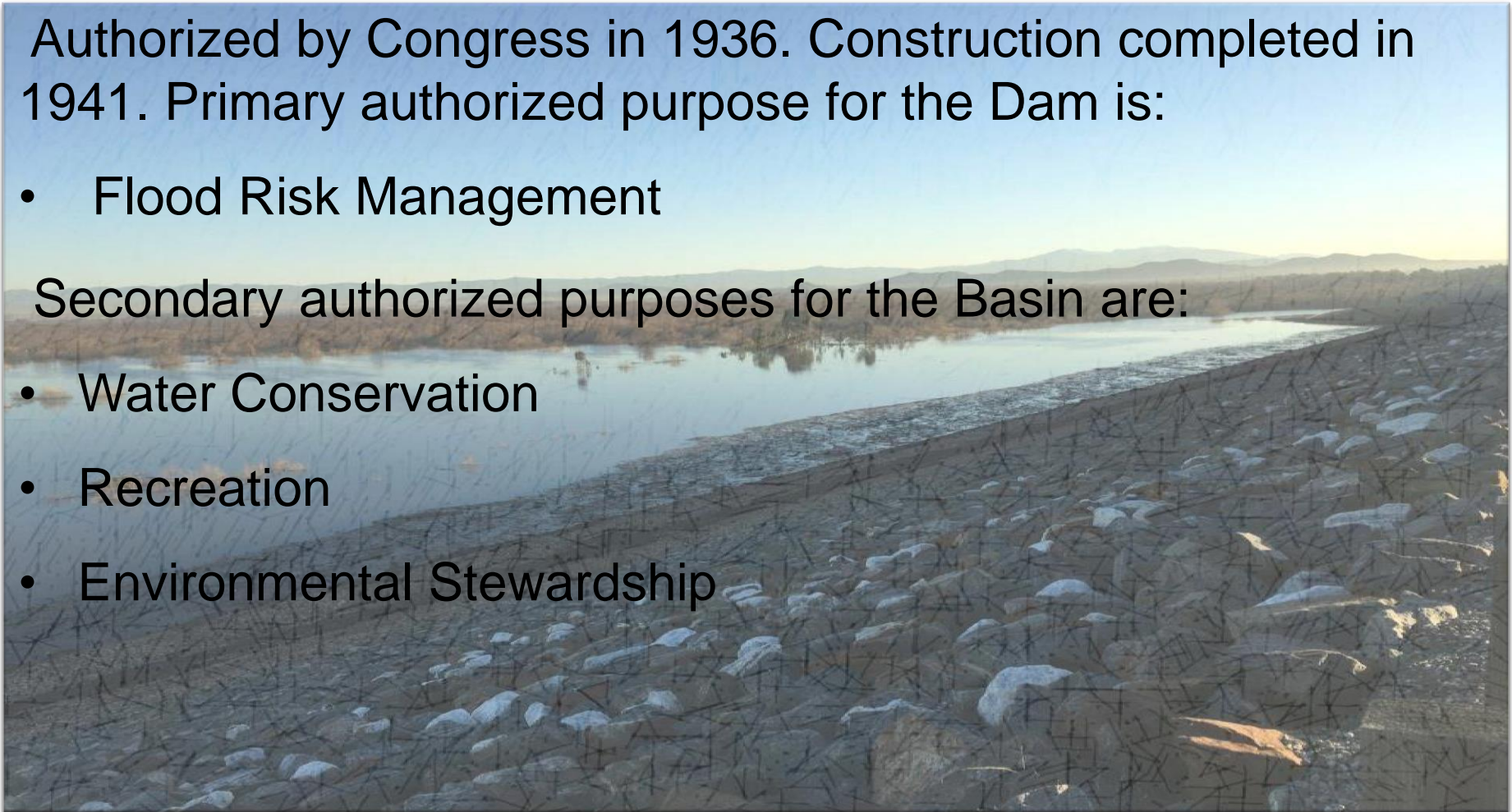
PRADO DAM BASIN MASTER PLAN UPDATE

Authorized by Congress in 1936. Construction completed in 1941. Primary authorized purpose for the Dam is:

- Flood Risk Management

Secondary authorized purposes for the Basin are:

- Water Conservation
- Recreation
- Environmental Stewardship



US Army Corps
of Engineers.



PRADO DAM BASIN MASTER PLAN UPDATE

Project Timeline

- 1976 -- Recreation Master Plan for the Prado Dam Reservoir Area
- 1990's -- Revisions begun based on input from associated watershed projects
- 2005 -- Draft Master Plan Update and EIS prepared and submitted for public review; comments received resulted in a change in direction
 - Overemphasis on Recreation
 - Unclear presentation of environmental constraints
- 2010 -- Update reinstated but halted due to lack of funding resources
- 2016 -- Master Plan Update funded



US Army Corps
of Engineers.



PRADO DAM BASIN MASTER PLAN UPDATE

Update needed based on landscape changes since 1976:

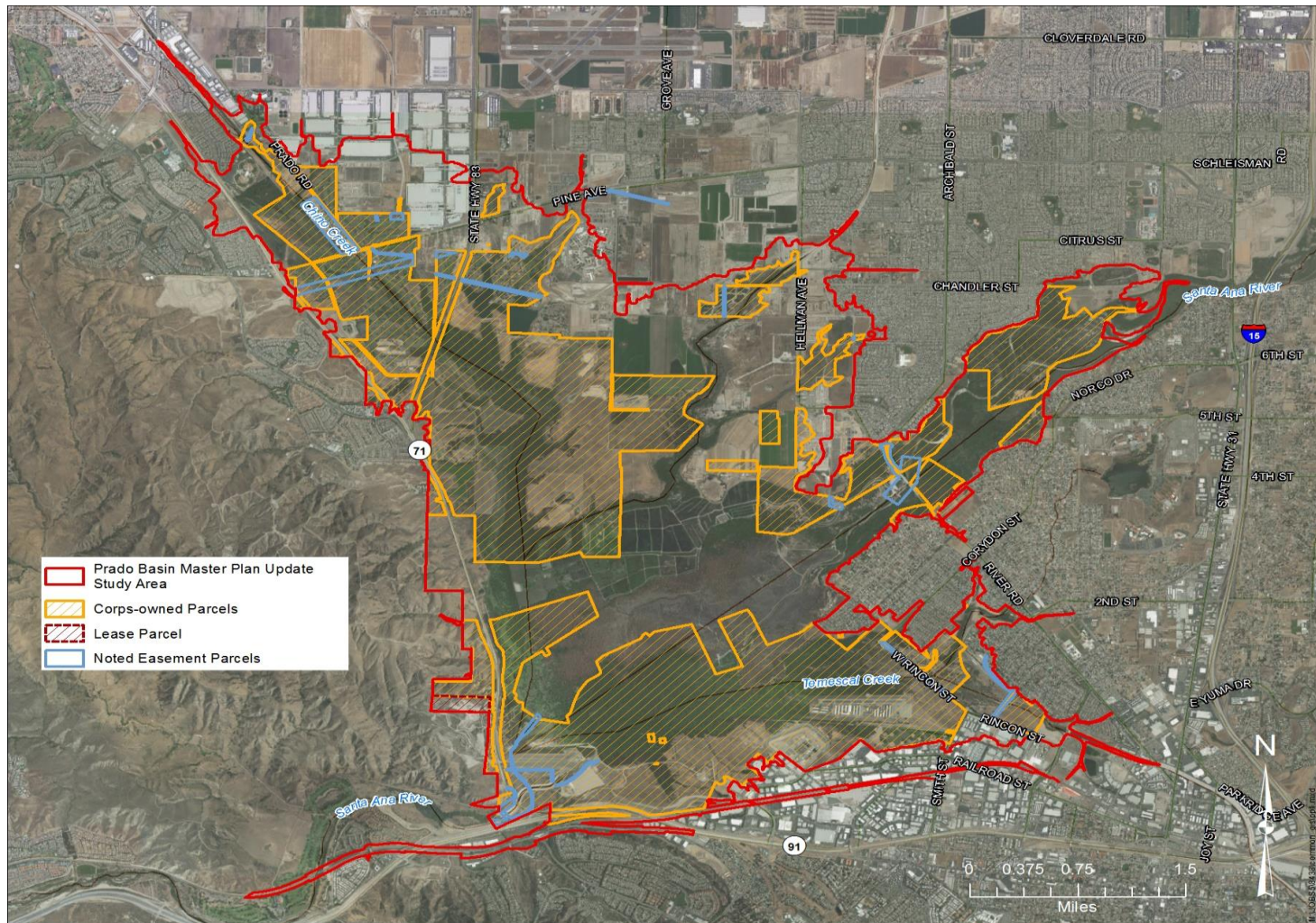
- Increase in the amount of sensitive biological resources
- Increase in visitation and variety of recreation opportunities.
- The changing profile of adjacent land uses
- Increase in development intensity
- Modifications to Dam and other areas within the basin
- Designation and restoration of lands as flood control mitigation
- Modifications to the Water Control Manual for water conservation
- Changes in recreation trail planning and implementation
- Proposed habitat restoration and expanded water conservation



US Army Corps
of Engineers.



PRADO DAM BASIN MASTER PLAN UPDATE DRAFT STUDY AREA



**Draft boundary and Corps-owned parcels subject to final verification by the Corps



US Army Corps
of Engineers.



PRADO DAM BASIN MASTER PLAN UPDATE

Plan Update Will Address:

- Flood Risk Management
- Safety
- Recreation
- Education and Interpretation
- Environmental Quality and Character
- Community Involvement
- Water, Soil, Air Quality
- Cultural Resources
- Visual and Auditory Quality
- Global Climate Change
- Wildlife Habitat
- Native Plant Communities



US Army Corps
of Engineers.



PRADO DAM BASIN MASTER PLAN UPDATE

Land Classifications:

- **Operations**

- Lands used solely for operation of the dam (e.g. dam, spillway, levees, dikes, maintenance facilities, etc.)

- **High Density Recreation**

- Lands used for intensive recreation by the public (e.g. day use areas, campgrounds, public concessions, quasi-public development)

- **Environmentally Sensitive**

- “Areas where scientific, ecological, cultural or aesthetic features have been identified.”



US Army Corps
of Engineers.



PRADO DAM BASIN MASTER PLAN UPDATE

Land Classifications (continued):

- **Multiple Resource Management: Lands with one of the following predominate uses that also allow for other compatible uses**
 - **Low Density Recreation**
 - **Passive recreational areas with minimal development**
 - **Wildlife Management**
 - **Lands designated for fish and wildlife stewardship**
 - **Vegetation Management**
 - **Lands designated for native vegetation stewardship**



US Army Corps
of Engineers.



PRADO DAM BASIN MASTER PLAN UPDATE

Land Classifications (continued):

- **Multiple Resource Management**
 - **Inactive or Future Recreation**
 - Closed recreation areas or areas with characteristics compatible with future recreation. Lands will be managed for multiple use until recreational status changes.
 - **Other Uses (e.g. Agriculture, easements)**



US Army Corps
of Engineers.



PRADO DAM BASIN MASTER PLAN UPDATE

Draft Plan Document Outline:

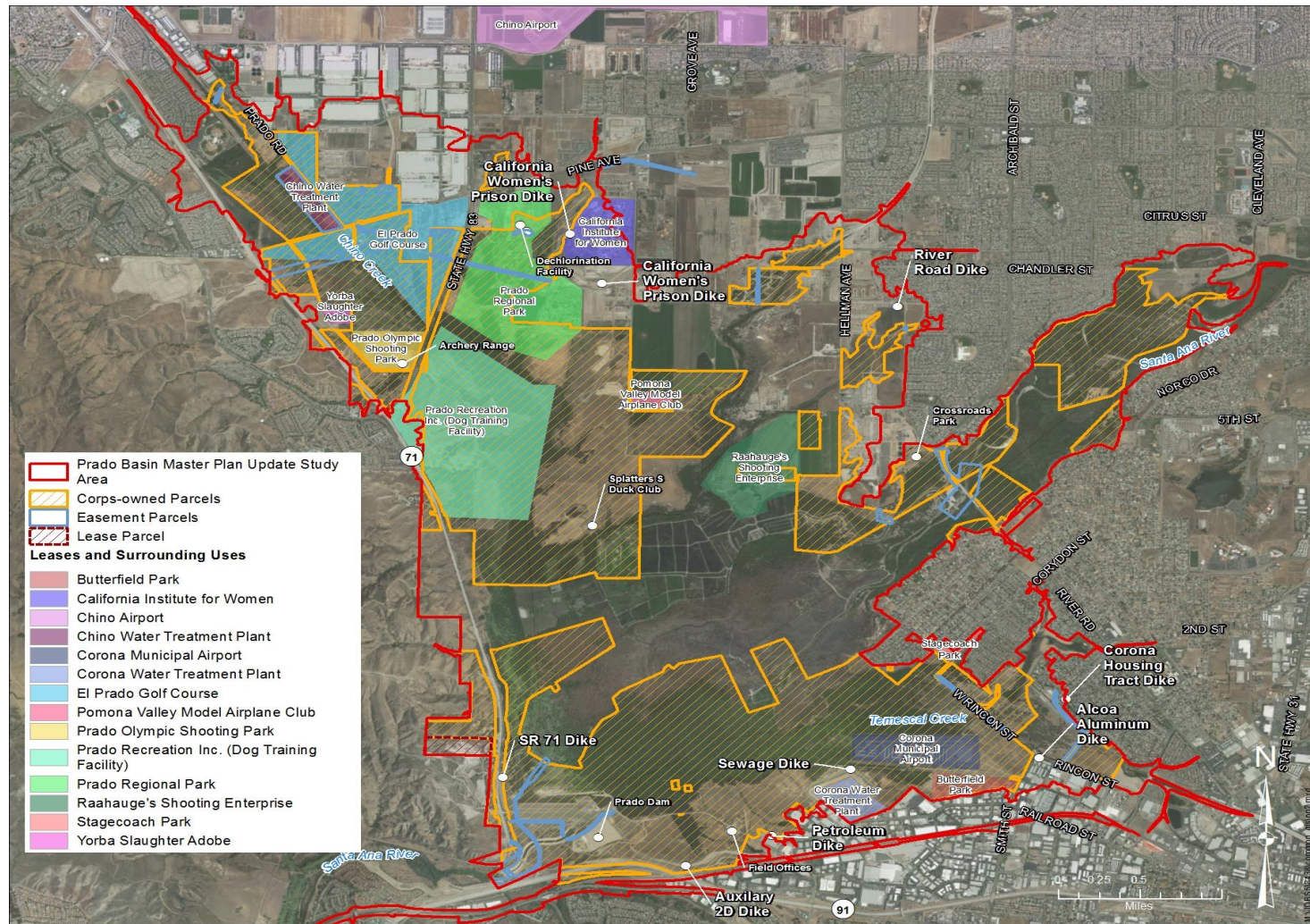
- Project Authorization
- Project Description
- Planning Process including Community Workshops
- Land Allocations, Land Use and Resource Inventory
(Existing Conditions)
- Land Classifications
- Resource Objectives
- Land Use and Resource Plan Recommendations
- Appendices



US Army Corps
of Engineers.



PRADO DAM BASIN MASTER PLAN UPDATE DRAFT PRIMARY LEASEES



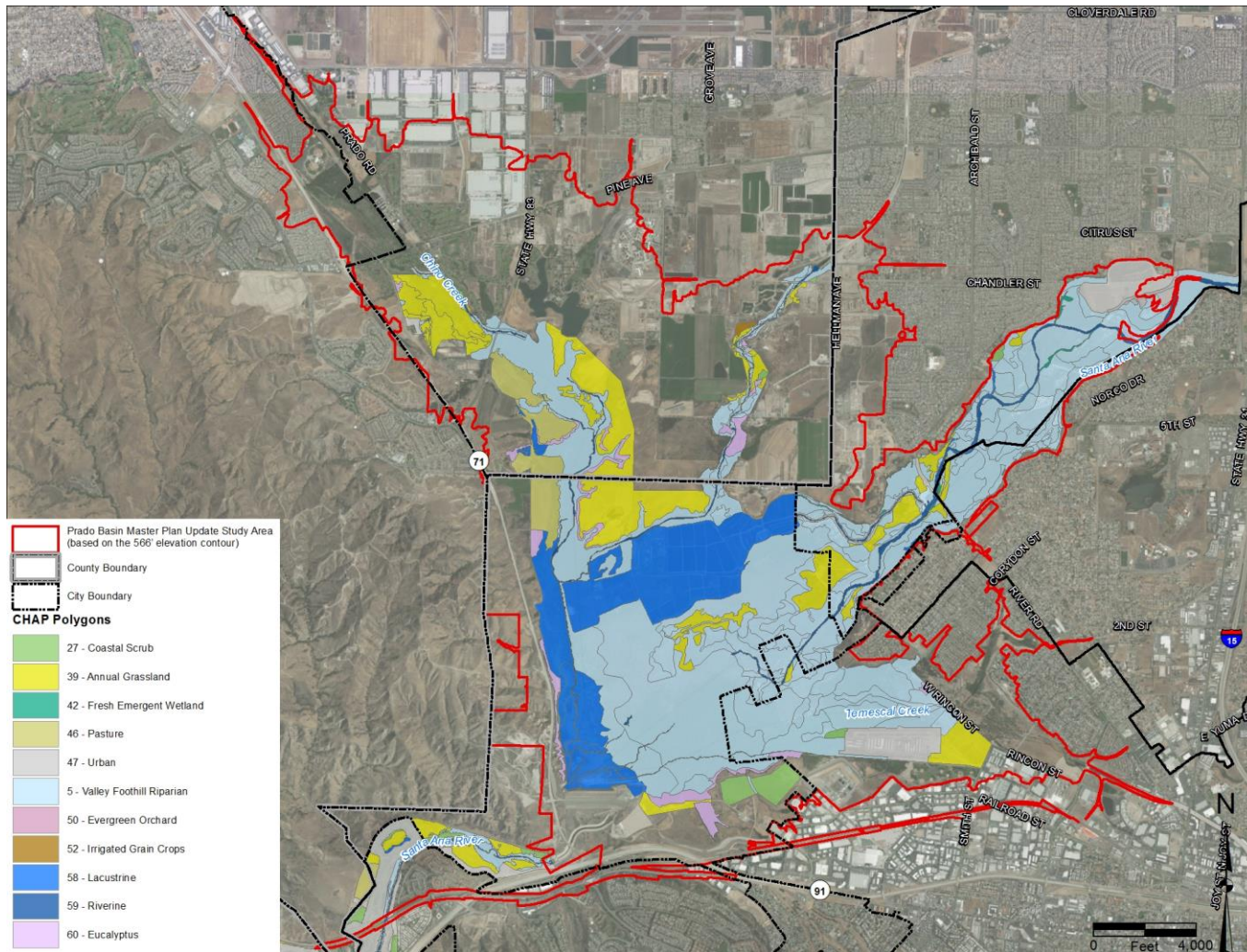
**Draft boundary and Corps-owned parcels subject to final verification by the Corps



US Army Corps of Engineers.



PRADO DAM BASIN MASTER PLAN UPDATE HABITAT MAPPING

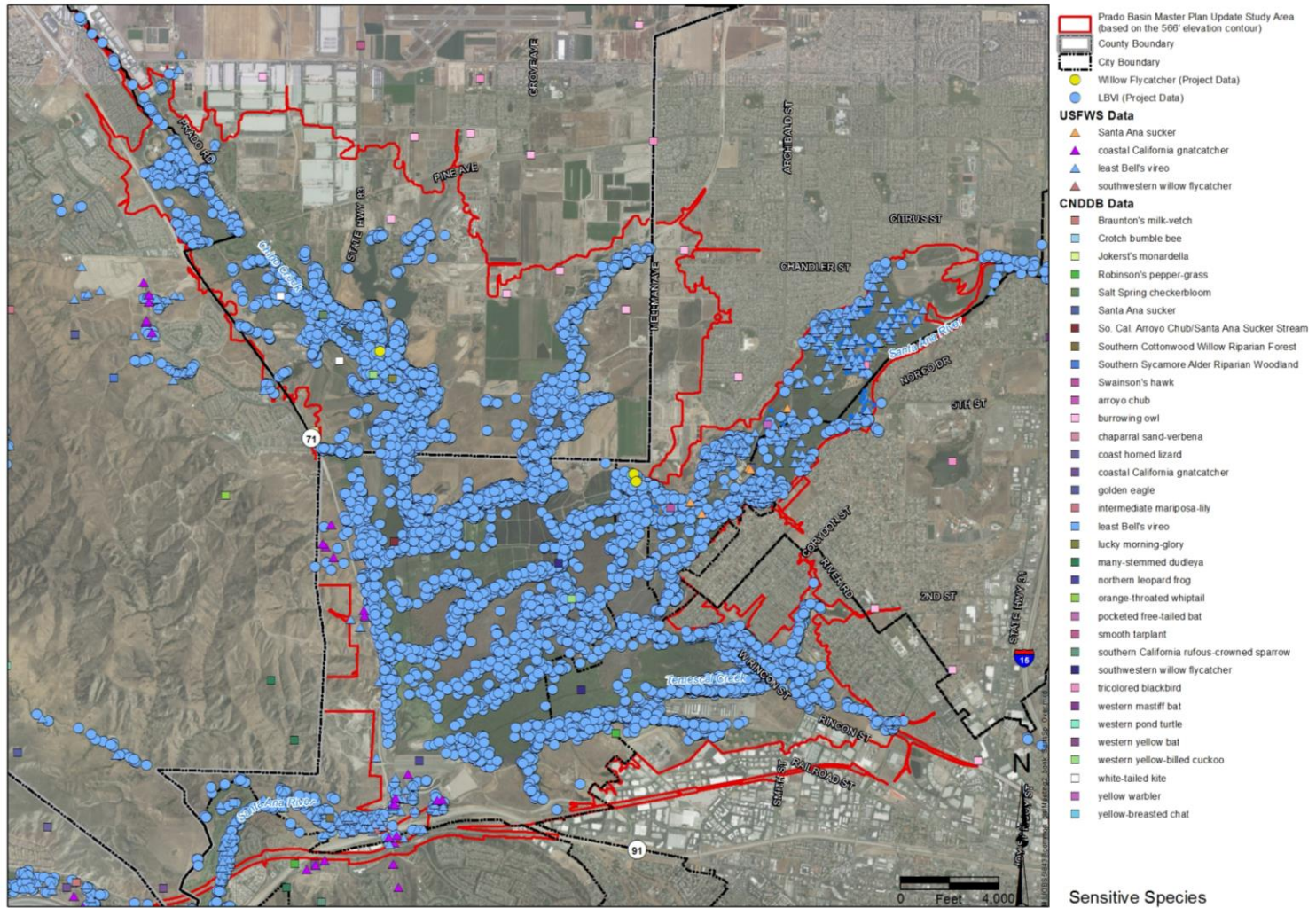


US Army Corps
of Engineers.

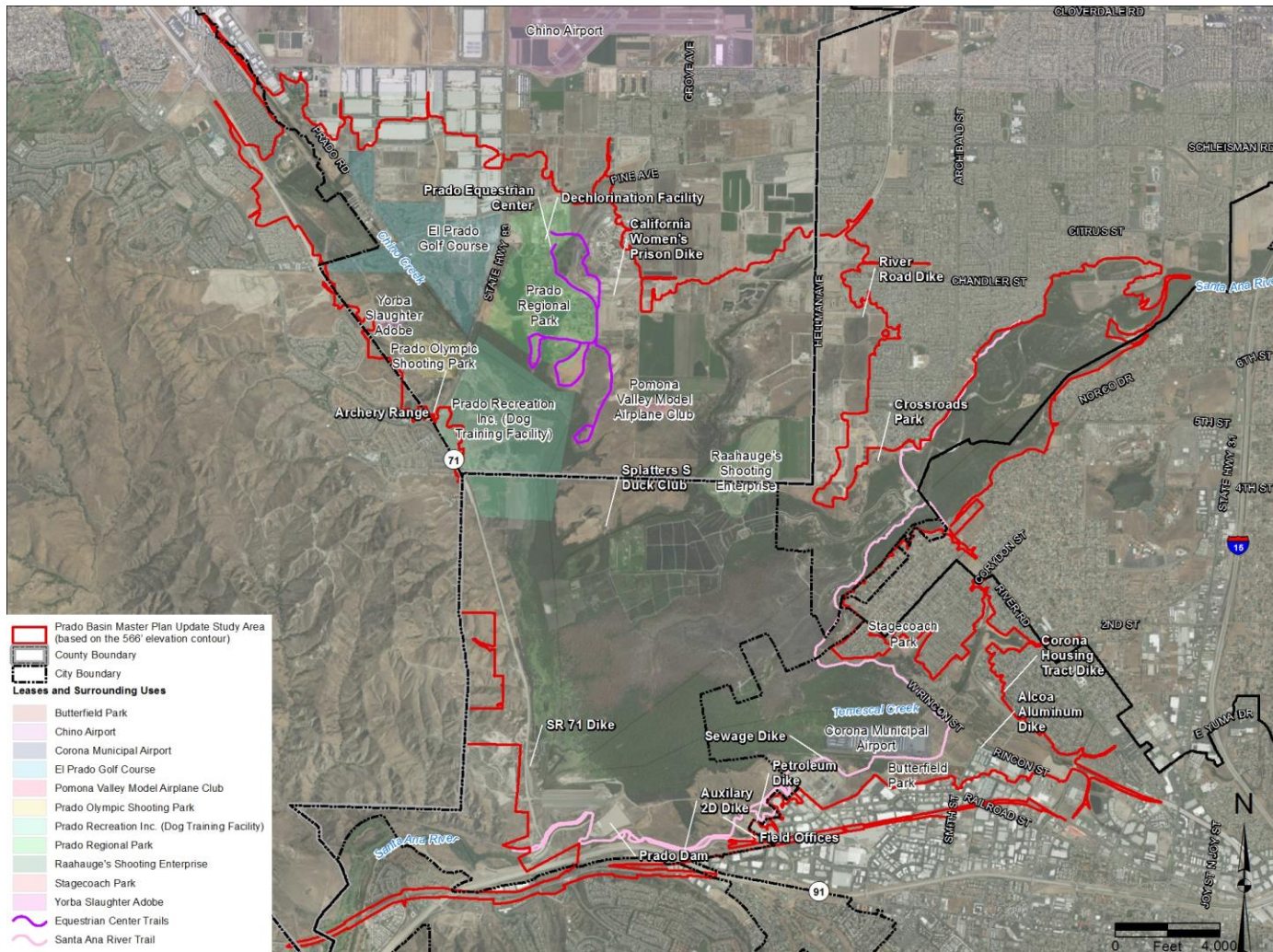


PRADO DAM BASIN MASTER PLAN UPDATE

SENSITIVE SPECIES



PRADO DAM BASIN MASTER PLAN UPDATE RECREATION AND LAND USES



US Army Corps
of Engineers.

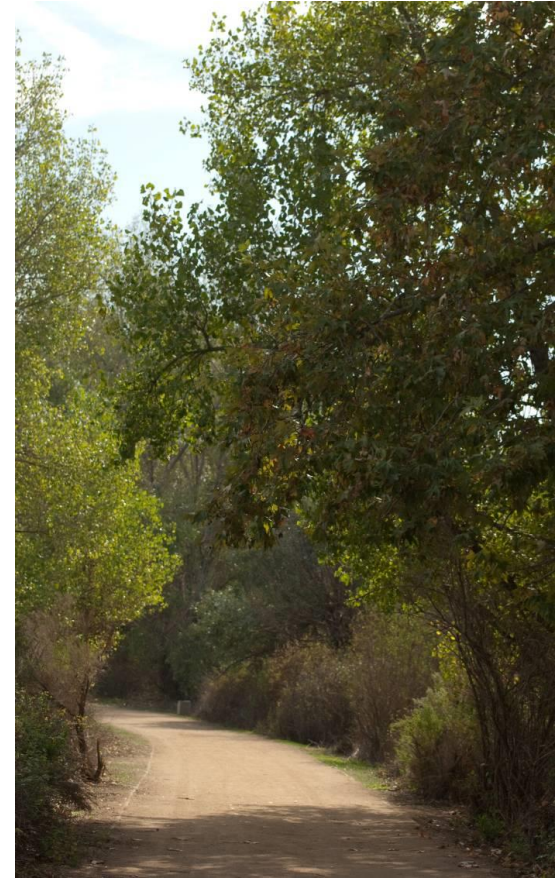


PRADO DAM BASIN MASTER PLAN UPDATE

Next Steps:

- Preparation of Draft Plan
- 3rd Stakeholder Meeting and Input
- Preparation of Final Draft Plan

Megan Wong 213-448-4517
Project Environmental Coordinator
Megan.T.Wong@usace.army.mil



US Army Corps
of Engineers.



PRADO DAM BASIN MASTER PLAN UPDATE

We Want Your Input!

On MAPS, doodle:

- Important places (and why)
- Missing environmental data
- Your walking, hiking, biking, riding trails
- Your favorite places to: _____
- Places that need attention
- Future plans to: _____



Label doodles with your name and your affiliation

On COMMENT CARDS, write down:

- What you doodled above
- Other questions, comments, concerns



US Army Corps
of Engineers.

